

## Course Information

### Registration

Registration deadline is February 24. Please note enrollment is limited. You may register by phone at **877.926.4664 (TTY: 711)** or online at [northwesternmedicine.nm.org/pem](http://northwesternmedicine.nm.org/pem).

You are encouraged to bring a laptop or tablet to access the presentations during the event. A limited number of printed handouts will be available upon request.

### Cost

\$50.00 for Northwestern Medicine employees and physicians as well as for non-affiliated physicians and clinicians. A light breakfast and lunch are included at no cost.

### Location

Northwestern Medicine Central DuPage Hospital  
25 North Winfield Road, Auditorium  
Winfield, Illinois 60190

### Parking

From Winfield Road, enter the hospital campus at Entry 2 or Entry 3. You have the option to valet park or self-park in Parking Lot 3.

Enter the hospital through the Inpatient Pavilion Entrance, as indicated on the map below.



25-0573/1124/1400  
© 2024 Northwestern Medicine. All rights reserved.

This educational seminar is intended for physicians, nurses and other clinicians who want to learn about the latest interventions and advancements in pediatric emergency medicine.



Central DuPage Hospital  
25 North Winfield Road  
Winfield, Illinois 60190

# 7th Annual Conference in Pediatric Emergency Medicine

March 3, 2025  
Northwestern Medicine Central DuPage Hospital  
25 North Winfield Road, Auditorium  
Winfield, Illinois 60190



# 7th Annual Conference in Pediatric Emergency Medicine

March 3, 2025





## Event speakers and topics

Topics will be presented by clinicians who are part of the collaborative program between Northwestern Memorial HealthCare and Ann & Robert H. Lurie Children's Hospital of Chicago and its affiliated physician groups.

**Michael Kipp, MD\*\***  
The ABCs of Pediatric Eye Emergencies

**Rashmi Kabre, MD\***  
Pediatric Trauma: Not Just Little Adults!

**Meta Carroll, MD\***  
**Arie Habis, MD\***  
Demystifying Decision-Making in Pediatric Head Injury

**Erica Popovsky, MD\***  
Won't Somebody Please Think of the Children? Pediatric Emergency Preparedness in the ED

**Elizabeth Alpern, MD, MSCE\***  
**Jacqueline Corboy, MD, MS\***  
**Kathleen Zielinski, APRN, CPNP-PC**  
Searching for the *Very Sharp* Needle in the Haystack: The Importance of Early Recognition and Treatment of Pediatric Sepsis

**Kirsten Loftus, MD, MEd\***  
Tiny Patients, Big Stakes: Stabilization of a Sick Neonate in the General Emergency Department

**Kristine Cieslak, MD\***  
**Jana Jaffe, MD\***  
Rash-ional Thinking: Testing Your Dermatology Diagnostic Skills

**Kathleen Zielinski, APRN, CPNP-PC**  
**Kella Fiore, RN, TNS**  
**Kelly Weaver, RN, CEN, CPEN, TNS**  
Code Blue: A Pediatric Nursing Escape Room Challenge

**Kristen Kester, MD, MPH\***  
**Jamie Lim, MD\***  
**Tara Funk Corcoran, MD\***  
Sound Decisions: Cardiac and Trauma Point-of-Care Ultrasound

**Kristine Cieslak, MD\***  
**Arie Habis, MD\***  
**Vishal Naik, MD\***  
**Melinda Hare, APN/NP**  
**Kathleen Zielinski, APRN, CPNP-PC**  
Simulation for High-Acuity Pediatric Events (SHAPE): A Simulation-Based Educational Experience for ED-Based Clinicians

\*Ann & Robert H. Lurie Children's Hospital of Chicago at Northwestern Medicine Central DuPage Hospital and Northwestern Medicine Delnor Hospital is a collaborative program between Northwestern Memorial HealthCare and Lurie Children's and its affiliated physician groups. The providers participating in this program are neither agents nor employees of Northwestern Medicine Central DuPage Hospital or Northwestern Medicine Delnor Hospital.

\*\*In the spirit of keeping you well informed, the identified physician is neither an employee nor agent of Northwestern Memorial HealthCare or any of its affiliated entities. This physician has selected our facilities as places where he wants to treat and care for his patients.

### Learning objectives

- › Discuss the presentation, differential diagnosis and treatment of pediatric ocular diseases and trauma presenting in the acute care setting.
- › Discuss the evaluation and management strategies specific to trauma in the pediatric population.
- › Apply PECARN rules to determine the need for attaining imaging in pediatric closed head injury.
- › Discuss the principles of sepsis recognition and treatment in the pediatric population.
- › Identify the unique challenges and considerations of pediatric disaster management and preparation.
- › Describe a differential diagnosis and systematic approach to the initial management of an undifferentiated, critically ill neonate.
- › Diagnose and treat dermatological diseases commonly presented in the emergency department.

### Accreditation Statement

The Northwestern University Feinberg School of Medicine is accredited by the Accreditation Council for Continuing Medical Education (ACCME) to provide continuing medical education for physicians.

### Credit Designation Statement

The Northwestern University Feinberg School of Medicine designates this live activity for a maximum of 8.0 *AMA PRA Category 1 Credit(s)*<sup>™</sup>. Physicians should claim only the credit commensurate with the extent of their participation in the activity.

### American Board of Pediatrics

Successful completion of this CME activity, which includes participation in the evaluation component, enables the learner to earn up to 6 MOC points in the American Board of Pediatrics' (ABP) Maintenance of Certification (MOC) program. It is the CME activity provider's responsibility to submit learner completion information to ACCME for the purpose of granting ABP MOC credit.

### American Board of Surgery Accredited CME and Self-Assessment

Successful completion of this CME activity, which includes participation in the evaluation component, enables the learner to earn credit toward the CME and Self-Assessment requirements of the American Board of Surgery's Continuous Certification program. It is the CME activity provider's responsibility to submit learner completion information to ACCME for the purpose of granting ABS credit. ABS CME credits will be submitted to the boards within 3 months of the conclusion of the activity.

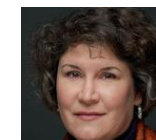
## Faculty



**Arie Habis, MD\***  
Site Leader, Pediatric Emergency Medicine  
Director, Simulation for High Acuity Pediatric Events  
Ann & Robert H. Lurie Children's Hospital of Chicago at Northwestern Medicine Central DuPage Hospital



**Elizabeth Alpern, MD, MSCE\***  
Division Head, Division of Emergency Medicine Department of Pediatrics  
Ann & Robert H. Lurie Children's Hospital of Chicago  
Northwestern University Feinberg School of Medicine



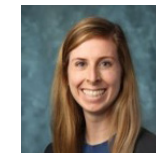
**Meta Carroll, MD\***  
Pediatric Emergency Medicine  
Ann & Robert H. Lurie Children's Hospital of Chicago at Northwestern Medicine Central DuPage Hospital



**Kristine Cieslak, MD**  
Section Chief, Pediatric Emergency Medicine  
Co-Director, Advocacy  
Ann & Robert H. Lurie Children's Hospital of Chicago at Northwestern Medicine Central DuPage Hospital



**Jacqueline Corboy, MD, MS\***  
Pediatric Emergency Medicine Director of Quality - Division of Emergency Medicine  
Ann & Robert H. Lurie Children's Hospital of Chicago  
Northwestern University Feinberg School of Medicine



**Tara Funk Corcoran, MD\***  
Pediatric Emergency Medicine Fellow, Ann & Robert H. Lurie Children's Hospital of Chicago



**Jana Jaffe, MD\***  
Pediatric Emergency Medicine Fellow, Ann & Robert H. Lurie Children's Hospital of Chicago



**Rashmi Kabre, MD\***  
Director of Trauma Services  
Pediatric Surgery  
Ann & Robert H. Lurie Children's Hospital of Chicago



**Kristen Kester, MD, MPH\***  
Pediatric Emergency Medicine  
Ann & Robert H. Lurie Children's Hospital of Chicago



**Michael Kipp, MD\*\***  
Pediatric Ophthalmology  
Wheaton Eye Clinic



**Jamie Lim, MD\***  
Pediatric Emergency Medicine Fellow, Ann & Robert H. Lurie Children's Hospital of Chicago



**Kirsten Loftus, MD, MEd\***  
Pediatric Emergency Medicine  
Ann & Robert H. Lurie Children's Hospital of Chicago



**Vishal Naik, MD\***  
Associate Emergency Medicine Service Director  
Co-Director, Simulation for High Acuity Pediatric Events  
Ann & Robert H. Lurie Children's Hospital of Chicago



**Erica Popovsky, MD**  
Associate Medical Director, Disaster Preparedness  
Emergency Medicine  
Ann & Robert H. Lurie Children's Hospital of Chicago



**Kella Fiore, RN, TNS**  
Pediatric Emergency Medicine  
Northwestern Medicine  
Central DuPage Hospital



**Melinda Hare, APN/NP**  
Ann & Robert H. Lurie Children's Hospital of Chicago



**Carol Tulley, MSN, RN, TNS, CEN, CPEN, TCRN**  
Emergency Medicine  
Northwestern Medicine  
Central DuPage Hospital



**Kelly Weaver, RN, CEN, CPEN, TNS**  
Pediatric Emergency Medicine  
Northwestern Medicine  
Central DuPage Hospital



**Kathleen Zielinski, APRN, CPNP-PC**  
Pediatric Emergency Medicine  
Ann & Robert H. Lurie Children's Hospital of Chicago at Northwestern Medicine Central DuPage Hospital

### Agenda – Monday, March 3, 2025

7:15 – 7:45 am	Sign in and continental breakfast
7:45 – 8:00 am	Welcome and Introductions
8:00 am – 12:15 pm	Presentations
12:15 – 1:00 pm	Lunch
1:00 – 5:15 pm	Presentations and Break-out Sessions

7:45 – 8:00 am	Welcome and Introductions <b>Arie Habis, MD*, Carol Tulley, RN, TNS, CEN, CPEN, TCRN</b>
8:00 – 9:00 am	The ABCs of Pediatric Eye Emergencies <b>Michael Kipp, MD**</b>
9:00 – 10:00 am	Pediatric Trauma: Not Just Little Adults! <b>Rashmi Kabre, MD*</b>
10:00 – 10:15 am	Break
10:15 – 11:15 am	Demystifying Decision-Making in Pediatric Head Injury <b>Meta Carroll, MD*, Arie Habis, MD*</b>
11:15 am – 12:15 pm	Searching for the <i>Very Sharp</i> Needle in the Haystack: The Importance of Early Recognition and Treatment of Pediatric Sepsis <b>Elizabeth Alpern, MD, MSCE*, Jacqueline Corboy, MD, MS*, Kathleen Zielinski, APRN, CPNP-PC</b>
12:15 – 1:00 pm	Lunch
1:00 – 2:00 pm	Won't Somebody Please Think of the Children? Pediatric Emergency Preparedness in the ED <b>Erica Popovsky, MD*</b>
2:00 – 3:00 pm	Tiny Patients, Big Stakes: Stabilization of a Sick Neonate in the General Emergency Department <b>Kirsten Loftus, MD, MEd*</b>
3:00 – 3:15 pm	Break

### Break-out sessions run simultaneously (choose one to attend)

3:15 – 4:15 pm  
Rash-ional Thinking: Testing Your Dermatology Diagnostic Skills  
**Kristine Cieslak, MD\*, Jana Jaffe, MD\***  
Code Blue: A Pediatric Nursing Escape Room Challenge  
**Kathleen Zielinski, APRN, CPNP-PC, Kella Fiore, RN, TNS, Kelly Weaver, RN, CEN, CPEN, TNS**

Sound Decisions: Cardiac and Trauma Point-of-Care Ultrasound  
**Kristen Kester, MD, MPH\*, Jamie Lim, MD\*, Tara Funk Corcoran, MD\***

Simulation for High-Acuity Pediatric Events (SHAPE): A Simulation-Based Educational Experience for ED-Based Clinicians  
**Kristine Cieslak, MD\*, Arie Habis, MD\*, Vishal Naik, MD\*, Melinda Hare, APN/NP, Kathleen Zielinski, APRN, CPNP-PC**

4:15 – 5:15 pm  
Repeat of above break-out sessions (Choose one to attend)